

# Rat Trap

Composition and Arrangement by  
Christoph Klenner

Big Band

Copyright © Christoph Klenner 2016, GEMA-Werk-Nr. 17319660

# Composition and Arrangement by Christoph Klenner

## Big Band

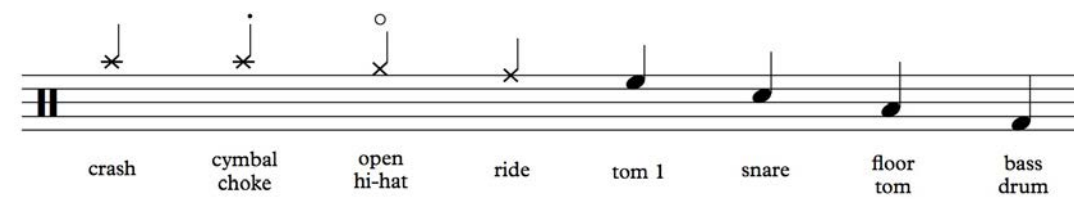
Alto Saxophone 1  
Alto Saxophone 2  
Tenor Saxophone 1  
Tenor Saxophone 2  
Baritone Saxophone

Trumpet 1  
Trumpet 2  
Trumpet 3  
Trumpet 4

Trombone 1  
Trombone 2  
Trombone 3  
Bass Trombone

Electric Guitar  
Piano  
Acoustic Bass  
Drum Set

## Drum-Notation-Key:



# Rat Trap

Light Shuffel Feel ♩ = 160

The score is for a 12-measure piece in 4/4 time with a 'Light Shuffel Feel' and a tempo of 160. The key signature has one flat (Bb). The instruments and their parts are:

- Alto Saxophone 1 & 2:** Rests throughout.
- Tenor Saxophone 1 & 2:** Rests throughout.
- Baritone Saxophone:** Rests throughout.
- Trumpet 1, 2, 3, 4:** Rests throughout.
- Trombone 1, 2, 3, Bass Trombone:** Rests throughout.
- Electric Guitar:** Starts with rests for measures 1-4. From measure 5, it plays a rhythmic pattern of eighth notes with a dynamic of *mf*. Chord diagrams for Bb and F are provided above the staff.
- Piano:** Starts with rests for measures 1-4. From measure 5, it plays a rhythmic pattern of eighth notes with a dynamic of *mf*. Chord diagrams for Bb and F are provided above the staff.
- Acoustic Bass:** Starts with rests for measures 1-4. From measure 5, it plays a rhythmic pattern of eighth notes with a dynamic of *mf*.
- Drum Set:** Starts with rests for measures 1-4. From measure 5, it plays a shuffel-style drum pattern with a dynamic of *mf*. A double bar line with a '2' above it is present at the end of measure 9.